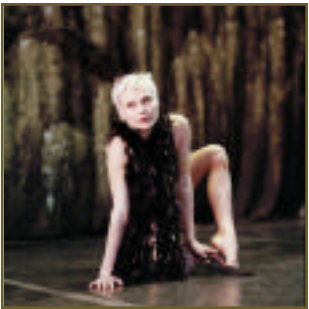




Photography: Hugo Glendinning



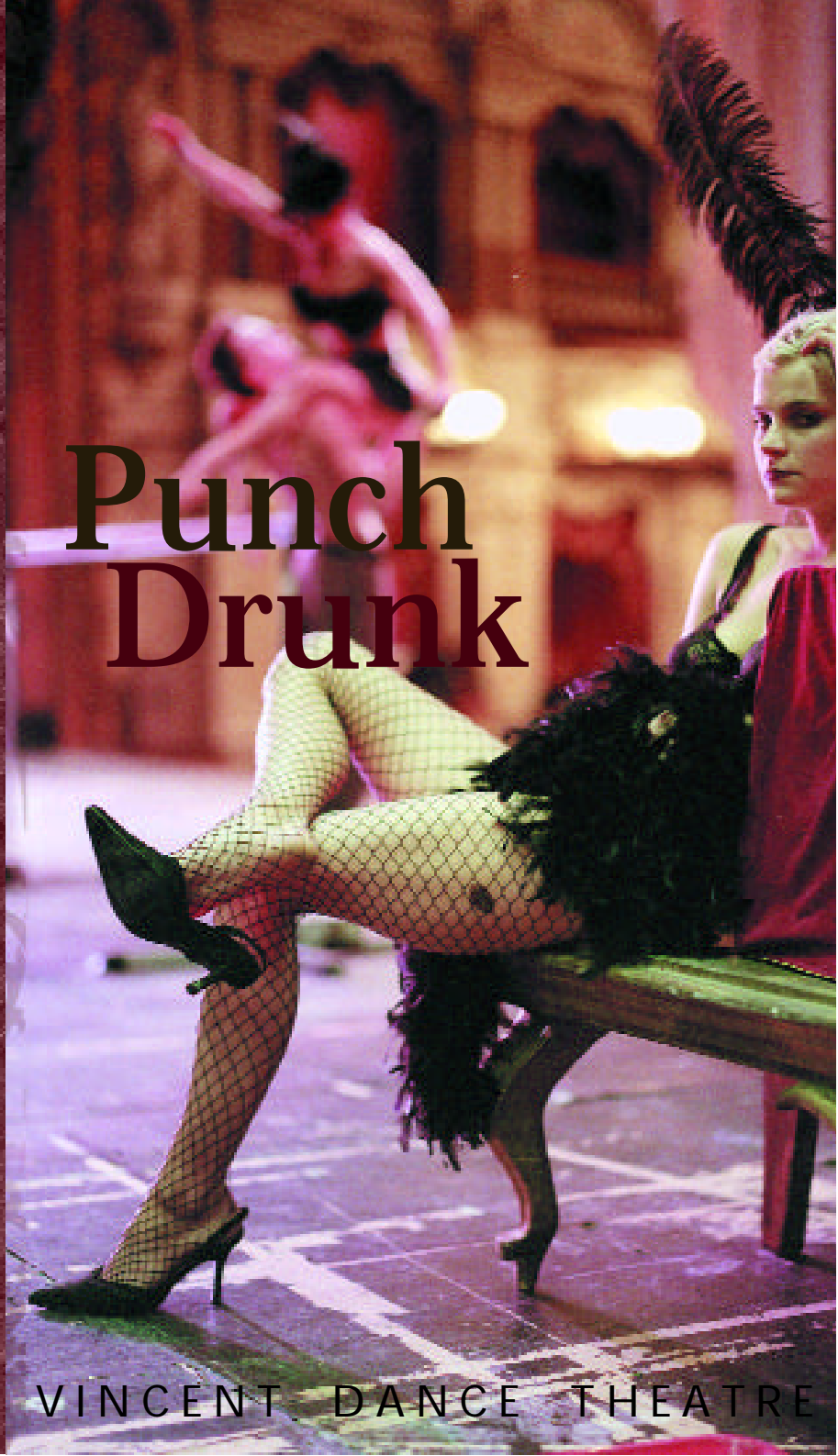
Graphic Design: Camilla Hall @ White Space Design t: 0117 902 5865



## Punch Drunk

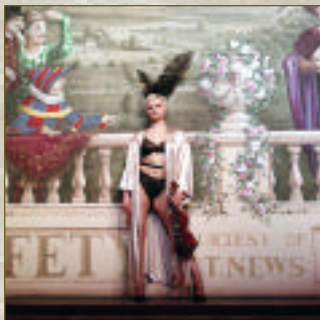
**Punch Drunk** is commissioned by Sheffield Theatres and the Nuffield Theatre, Lancaster. The production is funded by Arts Council England and the Esmée Fairbairn Foundation.

Charlotte Vincent is a Yorkshire Dance Partner. Vincent Dance Theatre is regularly funded by Arts Council England, Yorkshire.



# Punch Drunk

VINCENT DANCE THEATRE



## Punch Drunk

**Directed by Charlotte Vincent**

**Designed by Richard Lowdon**

**Composed by John Avery**

**Punch Drunk** celebrates Vincent Dance Theatre's tenth birthday with a sensational journey into the world of vaudeville and burlesque. Seductive showgirls and shameless men perform an exotic variety show, full of extravagant costumes, risqué routines, acrobatic feats and clever turns.

In an emotionally raw and comic story of undercurrents and underwear, **Punch Drunk's** six extraordinary performers reveal the backstage bickering, blood, sweat and tears behind their glamorously corseted speciality acts.

**Fresh from making new work in Australia and Taiwan, Charlotte Vincent has assembled** an international cast from Poland, Norway and the UK: including VDT's Associate Artist, TC Howard, Patrycja Kujawska, Geir Hytten, Aurora Lubos, Janusz Orlik and Jerwood Award-winning dancer and aerialist Lindsey Butcher.

Lighting Design by James Harrison

Costumes by Amanda Griffin



# Vincent Dance Theatre

## Press Reviews

'An extraordinary work from the outset...emotionally bold and physically remarkable. Charlotte Vincent's multi-task vision is fresh and engaging, the dialogue tightly effective and the dance element elastically watchable' **Independent on Sunday**

'Vincent is one of British dance's most imaginative practitioners, with the poetic physicality of her style absolutely suited to the rough and tumble complexity of our times' **The Stage**

'Painful to watch and agonising to perform...Images are socked home like cruise missiles...' **The Guardian**

'The commitment and intensity of the performers is remarkable' **Dance Europe**

'An extraordinary performance... shocking and highly original' **La Sicilia**

## Tour Dates Autumn 2004

8 & 9 October 2004 8.00pm  
Nuffield Theatre, Lancaster  
t: 0800 028 3042 [www.lancs.ac.uk/users/nuffield](http://www.lancs.ac.uk/users/nuffield)

12 October 2004 7.30pm  
Arena Theatre, Wolverhampton  
t: 01902 321 321 [www.arena.wv.ac.uk](http://www.arena.wv.ac.uk)

15 & 16 October 2004 7.45pm  
Sheffield Lyceum Theatre  
t: 0114 249 6000 [www.sheffieldtheatres.co.uk](http://www.sheffieldtheatres.co.uk)

19 October 2004 8.00pm  
Lakeside Arts Centre, Nottingham  
t: 0115 846 7777 [www.lakesidearts.org.uk](http://www.lakesidearts.org.uk)

20 October 2004 7.30pm  
Tonbridge School, Tonbridge  
t: 01732 361 908 [www.tonbridge-school.org](http://www.tonbridge-school.org)

23 October 2004 7.30pm  
Riley Theatre, Northern School of  
Contemporary Dance, Leeds  
t: 0113 219 3018 [www.nscd.ac.uk](http://www.nscd.ac.uk)

27 October 2004 7.30pm  
Mercury Theatre, Colchester  
t: 01206 573 948 [www.mercurytheatre.co.uk](http://www.mercurytheatre.co.uk)

29 October 2004 8.00pm  
Stanwix Arts Theatre, Cumbria  
t: 01228 534 664 [www.tulliehouse.co.uk](http://www.tulliehouse.co.uk)

8 & 9 November 2004 8.00pm  
Exeter Phoenix, Exeter  
t: 01392 667 080 [www.exeterphoenix.org.uk](http://www.exeterphoenix.org.uk)

11 November 2004 7.30pm  
Arc Theatre, Trowbridge  
t: 01225 756 376 / 766 241 [www.arctheatre.org.uk](http://www.arctheatre.org.uk)

13 November 2004 8.00pm  
Traverse Theatre, Edinburgh  
t: 0131 228104 [www.traverse.co.uk](http://www.traverse.co.uk)

Live performance running time, 50 minutes.

## Contacts

Tour Booking Sarah Trist  
t: +44 (0)20 8541 5399  
[trist@supanet.com](mailto:trist@supanet.com)

Vincent Dance Theatre  
t: +44 (0)114 221 0369  
[admin@vincentdt.demon.co.uk](mailto:admin@vincentdt.demon.co.uk)

[www.vincentdt.com](http://www.vincentdt.com)