

## CORE TEAM

Management &  
Producing Team

Have you considered the impact the themes of your work may have on your team?

Have you explored options for supervision & support?

Governance &  
Steering Group

Are there frameworks in place to support Safeguarding?

Are there clear communication channels reflecting accountability & responsibilities?

Creative  
Leaders

Is there support in place to allow appropriate processing of emotional labour?

Have you considered power dynamics which may impact emotional honesty?

## QUESTIONS FOR SAFEGUARDING: THE MAKING PROCESS

Questions for Safeguarding: The Making Process shares a series of prompts – to help you to consider your options for supporting and safeguarding your partner organisations, collaborators and the core team involved in the making process.

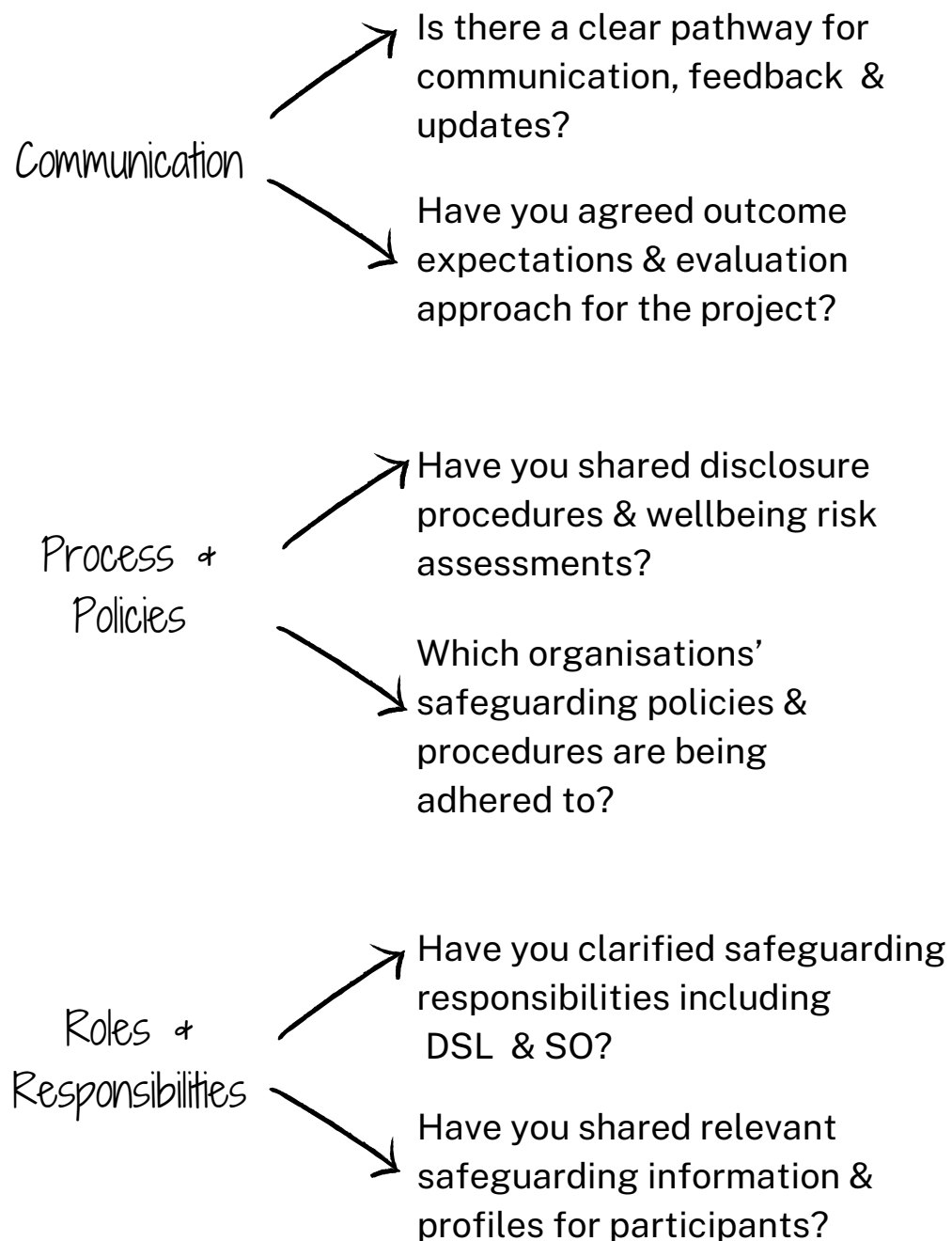
These questions emerged from reflective discussions between **Vincent Dance Theatre** and **Playing ON Theatre Company** whilst reviewing the complex parameters that interplay when co-producing work with vulnerable communities and younger participants.

Some questions / prompts may not be relevant to you / your organisation and some considerations may be new to you. The aim of this resource is to encourage reflective discussions within your team or for you to consider as an individual practitioner what is needed to work safely, develop a protective mindset and encourage wellbeing in all you do within the arts sector.

For further information contact [admin@vincentdt.com](mailto:admin@vincentdt.com)

To see the resource online go to [www.vincentdt.com](http://www.vincentdt.com) > Special Projects > Safeguarding Questions for Working in the Arts

# PARTNER ORGANISATIONS



# COLLABORATORS

